

---

# Tropical Birds And Butterflies Screen Savers

## User's Guide

**COSMI Corporation**  
2600 Homestead Place  
Rancho Dominguez, California 90220  
voice (310) 886-3510  
fax (310) 886-3517

**COSMI EUROPE, LTD.**  
Weir Bank, Bray on Thames  
Maidenhead, Berkshire SL6 2ED  
United Kingdom  
voice +44 (0) 1628 762686  
fax +44 (0) 1628 762685



## SYSTEM REQUIREMENTS

---

### ***Operating System***

Your computer must have Microsoft Windows 95, Windows 98, Windows NT 4.0, or higher versions of these operating systems.

### ***Disk Space***

This program requires approximately 12 megabytes of space on your hard drive. Additional space is required as you install screen savers.

### ***Hardware***



A mouse or pointing device is required.



To access our web site you must have a modem and a connection to the Internet.



In order to hear sounds you must have a sound card and speakers.

## INSTALLATION

---

### **WINDOWS 95, WINDOWS 98, OR WINDOWS NT 4.0**

1. Place the CD into your CD-ROM drive.
2. In the start-up screen click on START, then click on RUN.
3. Type in D:\CDSETUP and press Enter. (If your CD-ROM drive is not D, then change it to the letter associated with your CD-ROM drive.)
4. Follow any instructions that appear on the screen.

## **WELCOME TO TROPICAL BIRDS AND BUTTERFLIES SCREEN SAVERS**

---

Tropical Birds and Butterflies Screen Savers presents 200 images in 19 great screen savers, plus:

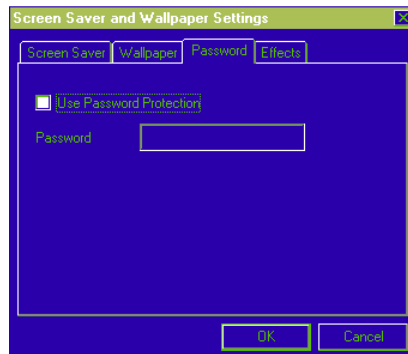
- Sliding Puzzle Game
- Wallpaper Changer
- Create Your Own Screen Saver
- Top 20 Solid Gold Games
- Bonus – 500 Sound Effects

It's the best value in screen savers!



The Wallpaper tab allows you to select Wallpaper and rotation.

The Password tab selects whether or not the screen saver will require a password to close:



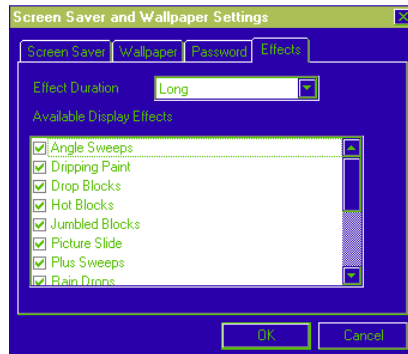
## **IMPORTANT NOTE ON PASSWORDS!**

---

If you choose to password protect your screen saver, and if you wish to change or to eliminate the password at a later time, DO NOT use the Windows Control Panel Display icon to make the change.

Make the change within the setup program provided with the saver.

The Effects tab allows you to select the transitions that will be used and how long the transitions will be used:



## **CHANGING SCREEN SAVERS**

---

To change screen savers, you must install that saver according to the directions shown above. If you want to change *between* screen savers that are already installed, then you must use the Windows Control Panel.

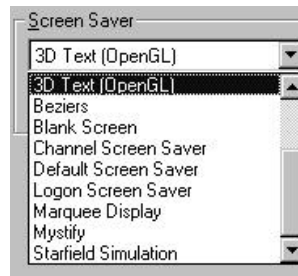
The Control Panel is accessed through the Task Bar:



After clicking on the Control Panel, you will see the following display:



After reaching the Control Panel, choose Display. You will then see a display similar to the following:



All of your **installed** screen savers will be shown under the Screen Saver tab in the Display Properties window.

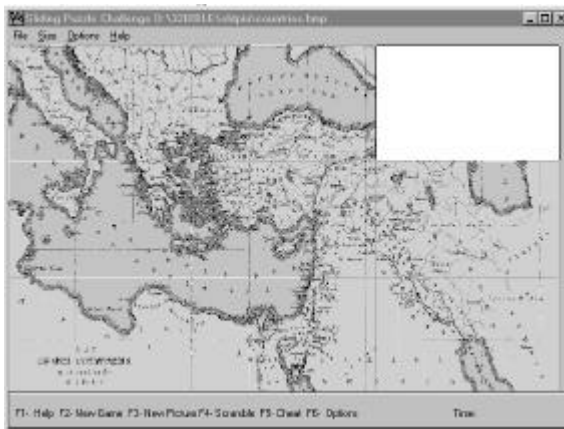
Select the screen saver you wish to use, and then set the options such as "Wait," "Password protected."

**NOTE:** Remember that any screen saver you want to use *MUST* be installed.

## PICTURE PUZZLE

---

Whether you want a hard or a simple picture puzzle, our Sliding Puzzle Challenge provides you with a way to use ANY Windows bitmap as a sliding puzzle. Options include the difficulty of the game (number of pieces from nine to 100), timed games, cheating and size of the puzzle.



The following commands are available:

### FILE:

New Game - Starts a new game.

New bitmap - Allows you to load ANY bitmap for use in the puzzle.

Scramble - Scrambles your puzzle randomly.

Solve it - Cheats and puts the puzzle back to new.

### SIZE:

You may select small, medium or large. CUSTOM allows you to enter ANY size you desire.

### OPTIONS:

Allows you to set permanently (or just for the game in play) your options which are:

- blank puzzle square
- number of pieces
- whether or not the game is timed
- time limit

We know that you will enjoy solving the puzzle!

## **BONUS**

---

A bonus of 500 Sound Effects and Top 20 Solid Gold Games is included.

## **SUPPORT**

---

We encourage all of our users to provide comments and suggestions about this program. This program is supported by voice, fax and Internet e-mail.

### ***Voice***

For telephone support, call COSMI's Customer Service at (310) 886-3510 during the hours below. (Note: All times are in the Pacific Standard Time zone.)

Monday through Thursday, 8:30 a.m. - 12:00 noon and 1:00 p.m. - 4:00 p.m.  
Friday, 8:30 a.m. - 12:00 noon.

☒ COSMI is very proud to be one of the few remaining software publishers to provide no charge customer support!

### ***E-Mail***

Support questions may be addressed to: [support@cosmi.com](mailto:support@cosmi.com).

### ***Fax***

You may fax us at (310) 886-3517.

### ***Internet***

Be sure to visit COSMI's Internet Web site: <http://www.cosmi.com>.

## **ACKNOWLEDGMENTS**

---

Team COSMI, the only fully integrated software developer and publisher in the budget software industry, wishes to give special thanks to Team COSMI members who made special contributions to this program:

Vice President of Publishing: Herb Kraft

Programming: Science South, Inc.

Packaging: Susan Randle and David Serrano

In-house Programming: John Passo

Testing: Jarrod Berlfein

Documentation Manager: Kathryn Berlfein

## **PROGRAM DESCRIPTION**

Tropical Birds and Butterflies Screen Savers is the best value in desktop fun anywhere! Enjoy over 200 images organized in 19 screen savers. You can change your wallpaper, and enjoy the Sliding Puzzle challenge using any bitmap (\*.bmp) file to create the puzzle. As a bonus, 500 Sound Effects, Create Your Own Screen Saver, and Top 20 Solid Gold Games are also included! Do something nice for your computer today and treat it, and yourself, to beautiful images and music.

Tropical Birds and Butterflies Screen Savers is © 1999 COSMI Corporation. All rights are reserved worldwide. Copying without the permission of COSMI is expressly prohibited except for the purpose of making one working copy for your own personal use. Contact COSMI for licensing arrangements.

## **WARRANTY**

COSMI makes no warranty of any kind, express or implied, including without limitation any warranties of merchantability and/or fitness for a particular purpose. COSMI shall not be liable for any damages, whether direct, indirect, special or consequential arising from a failure of this program to operate in the manner desired by the user. COSMI shall not be liable for any damage to data or property that may be caused directly or indirectly by use of this program.

The disk on which this software is recorded will be replaced within 90 days of purchase if found to be defective in material or workmanship. This shall constitute the sole remedy of purchaser and the sole liability of COSMI Corporation.

IN NO EVENT WILL COSMI BE LIABLE FOR ANY DAMAGES, INCLUDING ANY LOST PROFITS, LOST SAVINGS OR OTHER INCIDENTAL OR CONSEQUENTIAL DAMAGES ARISING OUT OF YOUR USE OR INABILITY TO USE THE PROGRAM, OR FOR ANY CLAIM BY ANY OTHER PARTY.

The License Agreement and Warranty shall be construed, interpreted and governed by the laws of the state of California.

**COSMI CORPORATION**  
**2600 Homestead Place**  
**Rancho Dominguez, CA 90220**  
**voice (310) 886-3510**  
**fax (310) 886-3517**

**COSMI EUROPE, LTD.**  
**Weir Bank, Bray on Thames**  
**Maidenhead, Berkshire SL6 2ED**  
**United Kingdom**  
**voice +44(0) 1628 762686**  
**fax +44 (0) 1628 762685**

**E-mail: [support@cosmi.com](mailto:support@cosmi.com)**  
**Internet Web site: [www.cosmi.com](http://www.cosmi.com)**

**990340**  
**ROM-607M**